

A CASE OF RADICULAR CYST

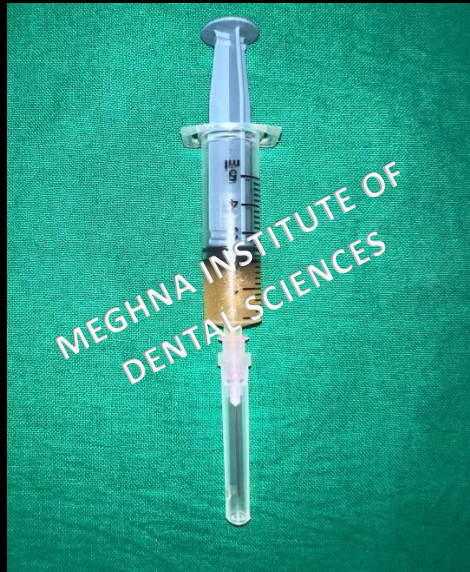
A 23 YEAR OLD FEMALE PATIENT, REPORTED TO DEPARTMENT OF ORAL AND MAXILLOFACIAL SURGERY WITH A SLOW GRADUALLY GROWING SWELLING IN RELATION TO RIGHT MAXILLARY REGION.



PICTURE OF THE LESION



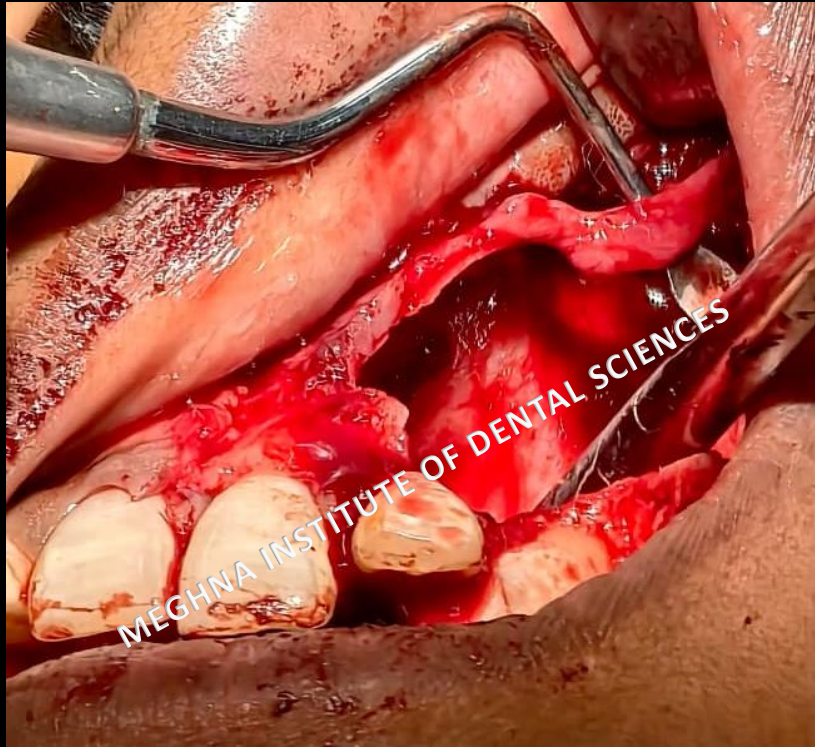
PICTURE OF OPG



FNAC WAS PERFORMED

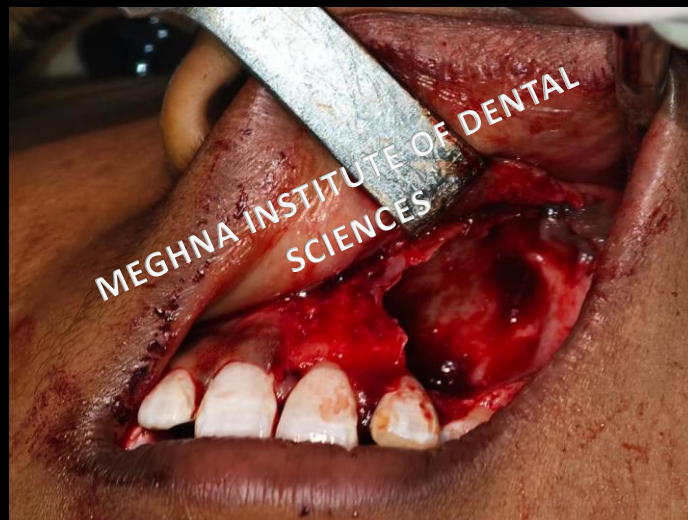


CREVICULAR INCISION IS GIVEN

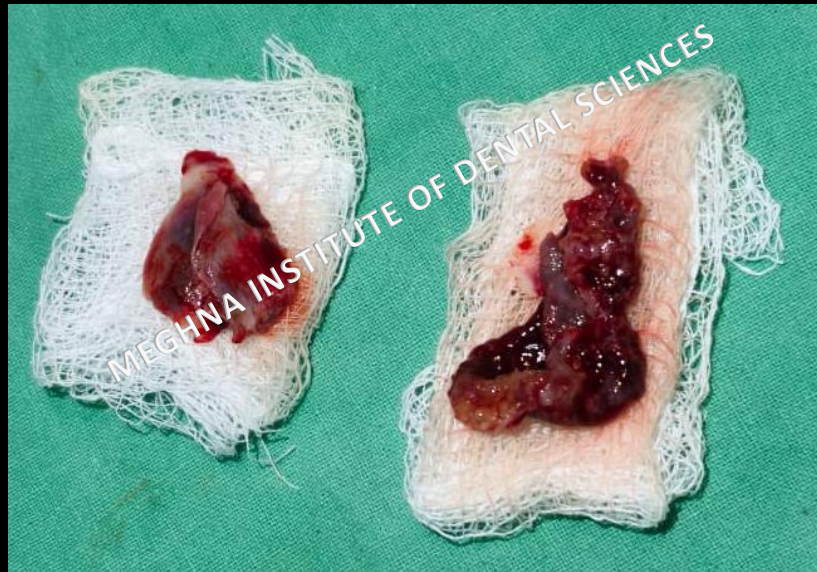


ENUCLEATION IS DONE

DUE TO EXTENSIVE BONE LOSS INFRA ORBITAL NERVE WAS INVOLVED



AFTER ENUCLEATION



THE LESION IS SENT FOR BIOPSY
FOLLOWED BY CLOSURE WAS DONE